

# SCHUUR: Beankings Lullaby

for ensemble

Violoncello

Roozbeh Nafisi

**A** Lento  $\text{♩} = 42 - 50$

*p*

**B**

**C**

*f*

*f* pizz. *f*

Violoncello

2 39 arco

D  
pizz.

43

arco

48

pizz.

E

53 ad lib.  
(pizz.)

arco

F

f

59

G

p

65 Whistle (register ad lib.)

f

pizz.

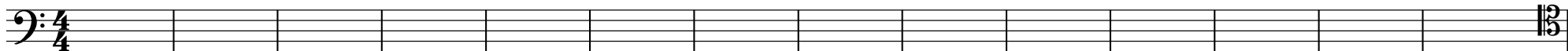
p

arco

Violoncello

68 Ad libitum: React to story, playing not extensively. Don't mask teller's voice. See full score

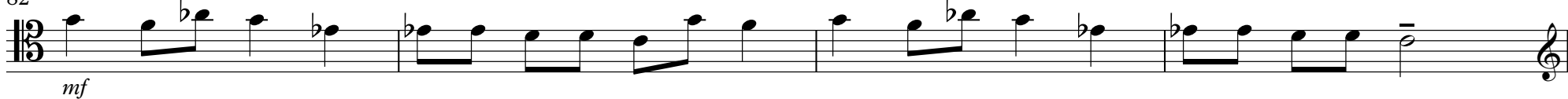
3



**H**

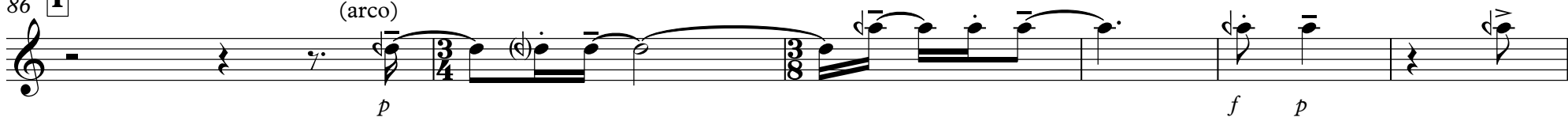
Sing (register ad lib.)

82 aay a va djaa nam, ba tsche ni ni djaa aa nam, laa laa laa laa laa ni ni a va djaan



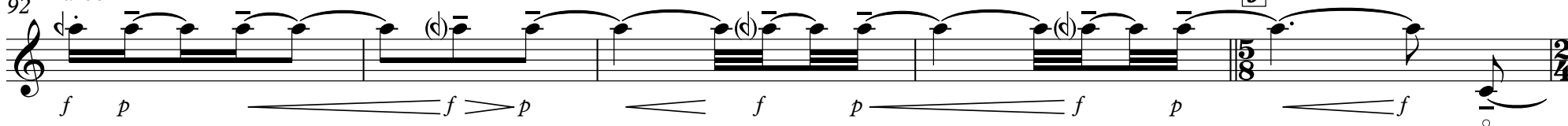
86 **I**

Play (arco)

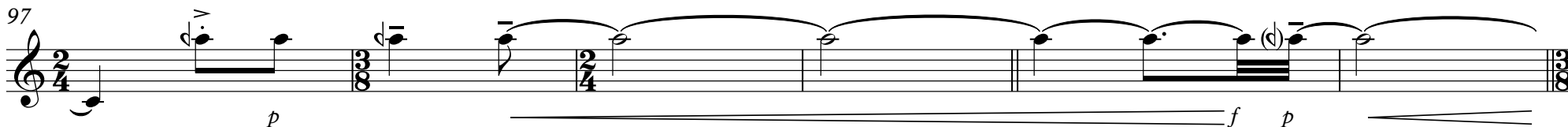


92 arco

**J**



97



103

**K**



Violoncello

4 108

*f* pizz.

113

**L** arco *p*

*p* (*p*) *f*

**M**

pizz. *sfz*

**N**

119 Wrong side of bridge (arco)

*ff* *p*

124

pizz. (Correct side of bridge)

*f* arco

Ad libitum: React to story, playing not extensively. Don't mask teller's voice. See full score (Ad lib goes on)

128

*f*

Violoncello

137 **O**

140

*p* *f* pizz. 5

Detailed description: This system contains the first four measures of the piece. Measure 137 starts with a treble clef, a key signature of one flat, and a 2/4 time signature. It features a bass clef staff with a half note G2 and a treble clef staff with a half note G4. A dynamic marking of *p* is below the bass staff. Measure 138 continues with a treble clef staff with a half note G4 and a bass clef staff with a half note G2. A dynamic marking of *f* is below the bass staff. Measure 139 has a treble clef staff with a half note G4 and a bass clef staff with a half note G2. A dynamic marking of *f* is below the bass staff. Measure 140 has a treble clef staff with a half note G4 and a bass clef staff with a half note G2. A dynamic marking of *f* is below the bass staff. A *pizz.* marking is above the treble staff in measure 140, and a fermata is above the bass staff in measure 140. A measure rest for 5 measures is indicated at the end of the system.

145 **P**

148

*ff* *fff*

Detailed description: This system contains measures 145 through 148. Measure 145 starts with a bass clef, a key signature of one flat, and a 5/8 time signature. It features a bass clef staff with a half note G2 and a treble clef staff with a half note G4. A dynamic marking of *ff* is below the bass staff. Measure 146 continues with a bass clef staff with a half note G2 and a treble clef staff with a half note G4. A dynamic marking of *fff* is below the bass staff. Measure 147 has a bass clef staff with a half note G2 and a treble clef staff with a half note G4. A dynamic marking of *fff* is below the bass staff. Measure 148 has a bass clef staff with a half note G2 and a treble clef staff with a half note G4. A dynamic marking of *fff* is below the bass staff. A fermata is above the bass staff in measure 148.

149 arco **P**

153

*f* *fffz*

Detailed description: This system contains measures 149 through 153. Measure 149 starts with a bass clef, a key signature of one flat, and a 5/8 time signature. It features a bass clef staff with a half note G2 and a treble clef staff with a half note G4. A dynamic marking of *f* is below the bass staff. Measure 150 continues with a bass clef staff with a half note G2 and a treble clef staff with a half note G4. A dynamic marking of *f* is below the bass staff. Measure 151 has a bass clef staff with a half note G2 and a treble clef staff with a half note G4. A dynamic marking of *f* is below the bass staff. Measure 152 has a bass clef staff with a half note G2 and a treble clef staff with a half note G4. A dynamic marking of *f* is below the bass staff. Measure 153 has a bass clef staff with a half note G2 and a treble clef staff with a half note G4. A dynamic marking of *fffz* is below the bass staff. A fermata is above the bass staff in measure 153.

154

157

3

Detailed description: This system contains measures 154 through 157. Measure 154 starts with a treble clef, a key signature of one flat, and a 2/4 time signature. It features a treble clef staff with a half note G4 and a bass clef staff with a half note G2. A dynamic marking of *f* is below the bass staff. Measure 155 continues with a treble clef staff with a half note G4 and a bass clef staff with a half note G2. A dynamic marking of *f* is below the bass staff. Measure 156 has a treble clef staff with a half note G4 and a bass clef staff with a half note G2. A dynamic marking of *f* is below the bass staff. Measure 157 has a treble clef staff with a half note G4 and a bass clef staff with a half note G2. A dynamic marking of *f* is below the bass staff. A fermata is above the bass staff in measure 157. A measure rest for 3 measures is indicated at the end of the system.

158

162

Detailed description: This system contains measures 158 through 162. Measure 158 starts with a treble clef, a key signature of one flat, and a 3/8 time signature. It features a treble clef staff with a half note G4 and a bass clef staff with a half note G2. A dynamic marking of *f* is below the bass staff. Measure 159 continues with a treble clef staff with a half note G4 and a bass clef staff with a half note G2. A dynamic marking of *f* is below the bass staff. Measure 160 has a treble clef staff with a half note G4 and a bass clef staff with a half note G2. A dynamic marking of *f* is below the bass staff. Measure 161 has a treble clef staff with a half note G4 and a bass clef staff with a half note G2. A dynamic marking of *f* is below the bass staff. Measure 162 has a treble clef staff with a half note G4 and a bass clef staff with a half note G2. A dynamic marking of *f* is below the bass staff. A fermata is above the bass staff in measure 162.

163 **R**

166

2 5

Detailed description: This system contains measures 163 through 166. Measure 163 starts with a treble clef, a key signature of one flat, and a 4/8 time signature. It features a treble clef staff with a half note G4 and a bass clef staff with a half note G2. A dynamic marking of *f* is below the bass staff. Measure 164 continues with a treble clef staff with a half note G4 and a bass clef staff with a half note G2. A dynamic marking of *f* is below the bass staff. Measure 165 has a treble clef staff with a half note G4 and a bass clef staff with a half note G2. A dynamic marking of *f* is below the bass staff. Measure 166 has a treble clef staff with a half note G4 and a bass clef staff with a half note G2. A dynamic marking of *f* is below the bass staff. A fermata is above the bass staff in measure 166. A measure rest for 2 measures is indicated at the end of the system.

Violoncello

6 176

*p*

**S**

Sing (register ad lib.)

181 ba tsche dju nam djaa nam, **T**a va dja nam dju u nam

*mf*

183 Play [and sing] your favorite childhood lullaby independetly from other musicians **U**  
(register ad lib)

*p* *f*

190

*f*

197 pizz. arco **V**

*f* *p*

204

*f* *sffz*

Violoncello

210 **W** arco **X** 7

217 Play and/or sing what you remember your neighboring musician performed as favorite lullaby (register ad lib) **Y** (arco) p

224 **Z** p

234 pizz. **AA** **BB** 2

243 arco **3** f p f

**CC** Sing (register ad lib.)  
 252 ni ni i djaa nam, ba tsche a va dja a nam ku da ke ni ni la la kon la la  
 mf

258 **DD** Play **rit.** p p